



ISO/TS 16949
Certified

PRECISION

MACHINING EXPERTS



Mecas Engineering (Pvt) Ltd.

www.mecasengineering.com

MECAS ENGINEERING (PVT) LTD. was established in 1987 for producing machined parts for various tractor & automotive OEM's. Mecas now enjoys customer confidence as a leading manufacturer of precision engineering parts in the country and abroad.

MISSION

To acquire customer needs and consistently provide products that meet all expectations, so that maximum customer satisfaction is achieved. To provide comfortable, green and friendly environment to employees and contribute socially.

EQUIPMENT & FACILITIES

Design and Development using (CAD/CAM), Grey Iron & SG Iron Foundry, Reverse Engineering know how, Tool Room, Conventional & CNC Machine Shop, CMM, Balance Checking, Profile Projector, Surface Analyzer and Roundness Testing Machines, Calibration of Gauges & Instruments, Phosphating, Painting, Heat Treatment, Backup Generator, LPG System.

Inspection Equipments



Coordinate Measuring Machine



Roundness Measuring Machine



Profile Projector X10, X20

QUALITY ASSURANCE

It has been company policy to actively pursue higher levels of quality through continuous improvement of our capabilities. Performance of processes is monitored using SPC techniques and process audits are regularly done to ensure continuous improvement.

All products are guaranteed against any kind of defect traceable to material, workmanship or manufacturing process.

THE GROUP

We are now a group of three companies each with unique facilities.

Mecas Engineering (Pvt)Ltd-	Manufactures Precision Machined Parts	Established 1987
Royal Tech (Pvt)Ltd-	Produces Sheet Metal and Machined Parts for Tractors	Established 1982
Mecas Foundry-	Produces Grey Iron and SG Iron Castings	Established 2000

PRODUCTS

For automotive OEM'S Brake Discs (ventilated & solid), Brake Drums, Hubs and Mounting Brackets. For tractor OEM'S Hydraulic Lift Assembly, Distribution Blocks, Pressure Valves, Hydraulic Cylinder & Piston, Spline Shafts, Differential Case, Tractor Front Grill and many other parts.

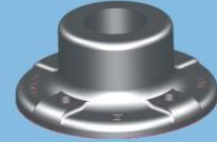
AUTOMOTIVE PRECISION MACHINED PARTS



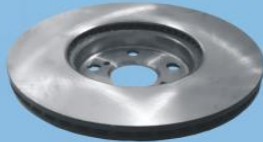
HUB FRONT HYUNDAI SHEHZORE



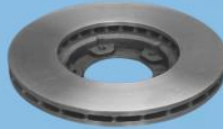
HUB FRONT TOYOTA HILUX



HUB 4-HOLE EXPORT



DISC FRONT TOYOTA COROLLA



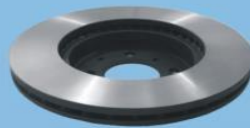
DISC FRONT TOYOTA HIACE



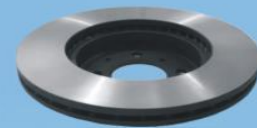
DISC FRONT TOYOTA VITZ



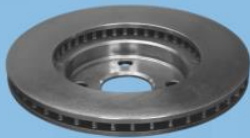
DISC FRONT TOYOTA CAMRY



DISC FRONT HONDA CIVIC



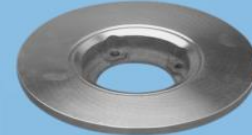
DISC FRONT HONDA CITY



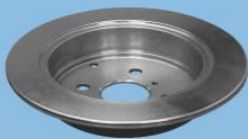
DISC FRONT HYUNDAI SANTRO



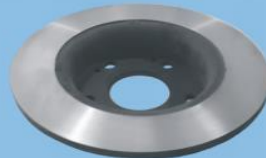
DISC FRONT HYUNDAI SHEHZORE



DISC FRONT DAIHATSU CUORE



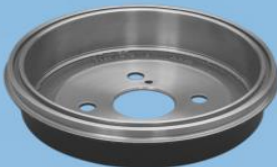
DISC REAR TOYOTA COROLLA



DISC REAR HONDA CIVIC



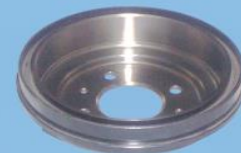
PULLEY CRANK DAIHATSU CUORE



DRUM REAR TOYOTA HILUX



DRUM REAR DAIHATSU CUORE



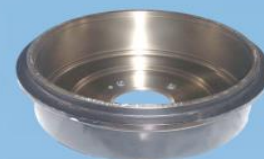
DRUM REAR HYUNDAI SANTRO



DRUM REAR HONDA CITY



DRUM EXPORT



DRUM REAR HYUNDAI SHEHZORE

OVER VIEW OF PLANT MECAS ENGINEERING (PVT) LTD.



AWARDS

- 1999 Overall Performance award by Indus Motors Company Ltd.
- 2003 Overall Performance award by Indus Motors Company Ltd.
- 2005 Suppliability award by Indus Motors Company Ltd.
- 2005 Quality award by Honda Atlas Car (Pakistan) Ltd.
- 2006 Overall Performance award by Dewan Farooq Morors Ltd.
- 2006 Quality award by Indus Motors Company Ltd.
- 2008 Quality award by Indus Motors Company Ltd.
- 2009 Quality award by Indus Motors Company Ltd.
- 2012 Cost Kaizen award by Indus Motors Company Ltd.



SINCE

- 1998 Indus Motors Company Ltd.
- 2001 Dewan Farooq Motors Ltd.
- 2003 Honda Atlas Cars (Pakistan) Ltd.
- 1987 Millat Tractors Ltd
- 1989 AL - Ghazi Tractors Ltd.

OEM CUSTOMERS

- Manufacturer of **TOYOTA** brand vehicles
- Manufacturer of **HYUNDAI** brand vehicles
- Manufacturer of **HONDA** brand cars
- Manufacturer of **MASSEY FERGUSON** tractors.
- Manufacturer of **FIAT / NEW HOLLAND** tractors.



Mecas Engineering (Pvt) Ltd.

1/2 k.m, Katar Bund Road ,Thokar Niaz Baig,Off. Multan Road Lahore-Pakistan

Tel:+92-42-35299513-15 Fax:+92-42-35299522, 35299511

E-Mail:mecas@mecasengineering.com

www.mecasengineering.com